



# SWING CHECK VALVE

## Model SC

This Swing Check Valve is intended for installation in Preaction systems using supervisory pressure as low as 1 psi. The Swing Check Valve provides compact, lightweight design for easy and comfortable installation. Its hydraulically streamlined body design and spring loaded elastomeric faced clapper, present a very low friction loss, non-slam closing characteristics and leak free sealing.

### Features

- Grooved end connections (Flange adaptors available)
- Compact, lightweight design
- Streamlined body design provides very low friction loss
- Non-slamming, spring loaded clapper
- Elastomer faced clapper provides leak free sealing

### Approvals

UL Listed and FM Approved for horizontal and vertical installation.

### Materials

- Body: Coated Ductile Iron
- Internals: Stainless Steel and Bronze
- Seal: EPDM

### Pressure Rating

- Rated working pressure 250psi / 17.2bar
- Factory hydrostatic test pressure 500 psi / 34.5bar

### End Connections

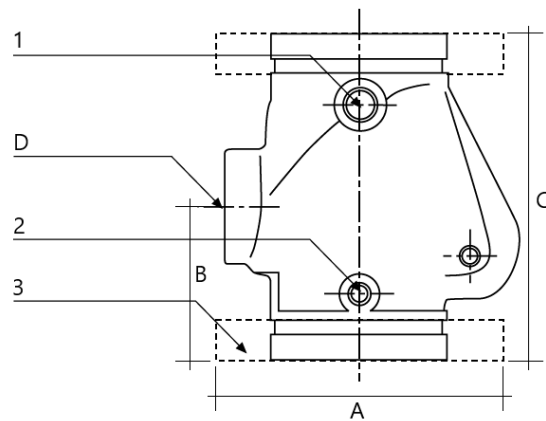
Grooved ANSI/AWWA C606, 2-8"

### Installation

When this Swing Check Valve is installed vertically, the direction of the flow arrow must point upward. In Preaction systems, the valves must be installed vertically and primed with water up to the main drain port.

### Maintenance

The Swing Check Valve and associated equipment should periodically be given a thorough inspection and test, see BERMAD Installation Operation and Maintenance (IOM) instructions for specific systems; also refer to NFPA 25. Check Valves should be inspected and operated at least annually. Parts should be replaced as required.



Ø	mm			"
	A	B	C	
2"; DN50	156	100	220	¾"
3"; DN80	200	109	244	1¼"
4"; DN100	224	160	245	2"
6"; DN150	280	193	292	2"
8"; DN200	340	209	356	2"

Part	Description
1	Air pressure supply ¼"NPT
D	Drain Port
2	¼"NPT (plugged)
3	Flange Adaptor (optional)

