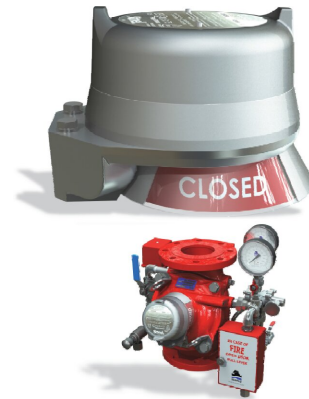


# ROTATING LIMIT SWITCH BOX

## Model RS9

The Rotating Limit Switch Box Assembly model QT is an accessory which enables remote and local valve position monitoring of BERMAD 400Y Torrent Deluge / Water Control Valves. The low profile robust anodized and epoxy-coated aluminum housing makes it well-suited for use in corrosive, heavy wash down applications and harsh environments. The limit switch box assembly is suitable for Zone 1 hazardous locations as per IEC/EC or Div. 1 to NEC/NEMA standards (see specification below). It is equipped with two SPDT type proximity switch sensors, hermetically-sealed, and activated by an internal magnetic target. The switch is equipped with Tungsten contacts, designed for moderate power applications and is electrically rated for 3 Amps at 125VAC or 240 VAC. The switch box incorporates a highly visible dual color visual position indicator.



### Specifications

**Switch Type:** 2xProximity SPDT, Hermetically-sealed

**Electrical ratings:** 3 A @ 125/220VAC, 100 W max, 2.0 W min

**Maximum voltage drop:** 0.1 V @ 10 mA, 0.5 V @ 100 mA

**Contacts composition:** Tungsten

**Enclosure protection ratings:** IP 67, NEMA 4, 4X and 6

**Temperature rating:** -40°C to 80°C (-40°F to 176°F)

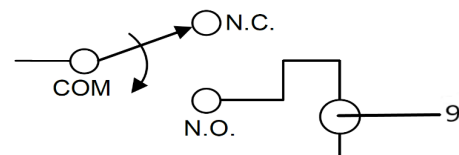
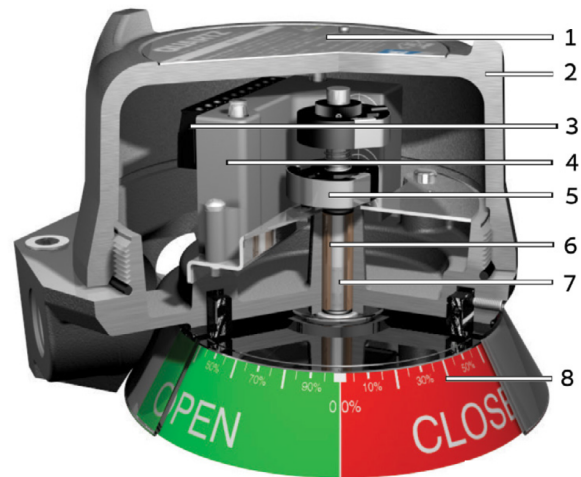
**Approvals:** IEC-Ex and ATEX certified for Category II 2G Ex d IIC T6

**Optional:** Class I, Division 1,

Groups A, B, C, D and Class II, Division 1,

Groups E, F, G to NEC 500, NEMA 4,4X, 7, 9

**Connections:** Switch box cable entries: 1x1/2" & 1x3/4" NPT



### Materials of construction

**Housing:** Epoxy-coated anodized aluminum

**Visual Position Indicator:** Lexan® polycarbonate

**Elastomeric/seals:** NBR

**Drive shaft:** Stainless steel

**Drive bearing:** Bronze, oil impregnated

**Fasteners:** Stainless steel

**Wetted parts:** Stainless steel 316

### Optional Materials

**Housing:** Stainless steel 316

**Wetted parts:** Monel, Ni.Al.Bronze

Part	Description
1	Enclosure
2	Screw on cover
3	Terminal strip
4	Switches
5	Cam
6	Bearing
7	Sealed drive shaft
8	Indicator
9	Signalling device

