

GENERAL PURPOSE PRESSURE SWITCH

Model PS-10

The Model PS-10 adjustable, pre-set Pressure Switch is suitable for pressure deviation detection in non hazardous locations. Typically used for BERMAD Deluge or Pre-action valve systems, or other control valves. The model PS-10 is also used to provide a low pressure supervisory signal for BERMAD Pre-action Systems and pneumatically controlled deluge valves.

Features

Weather/UV/Flame Resistant High Impact Composite
IP66 / NEMA 4 watertight and dust proof when used with suitable cable connection

20.7 bar (300 psi) system pressure rated

One SPDT or two SPDT version for DPDT action (marked with 2A suffix)

Convenient field adjustability

Global approvals

Reliable and dependable

Note:

These pressure switches have a normal service life of 10-15 years. However, the service life may be significantly reduced by local environmental conditions.

Approvals

UL and ULC listed

FM Approved

VdS Approved

CE Marked

Materials

Wetted parts: Polyamide (PA), corrosion resistant

Cover: High Impact Composite

Base: Die-Cast Aluminum

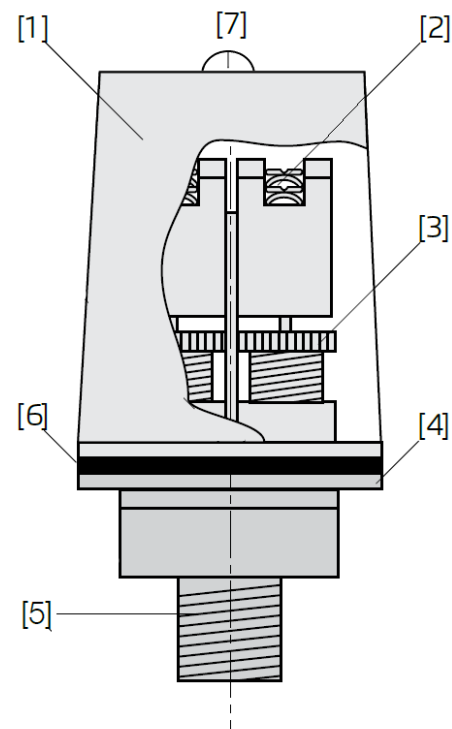
Connections

Pressure: 1/2" NPT (M)

Two knockouts for 1/2" conduit

Typical Installation

The Pressure Switch shall be connected to the BERMAD valve alarm discharge piping. Ensure that no shut-off valves are located between the alarm piping and the Pressure Switch. The device should be mounted in an upright position. IP66/NEMA 4 conduit fitting or cable gland is required for outdoor installations



Part	Description
1	Cover
2	Terminal screws
3	Adjusting screw
4	Base
5	Pressure sensing connection
6	Gasket
7	Cover fixing screw



PS-10

Pressure Rating & Range

Pressure Rating: 20.7 bar (300 psi)
 Factory set: +/- 1.0 bar (15 psi)
 Adjusting range: 0.3 - 1.03 bar (4 to 15 psi)
 Differential: 0.13 bar (2 psi) typical
 Maximum pressure: 20.7 bar (300 psi)
 Tamper-Proof Cover: Cover requires a special key (supplied) for removal

Electrical Ratings

10 Amps @ 125/250VAC
 2.0 Amps @ 30VDC
 Single or dual SPDT (from C)

Enclosure Class

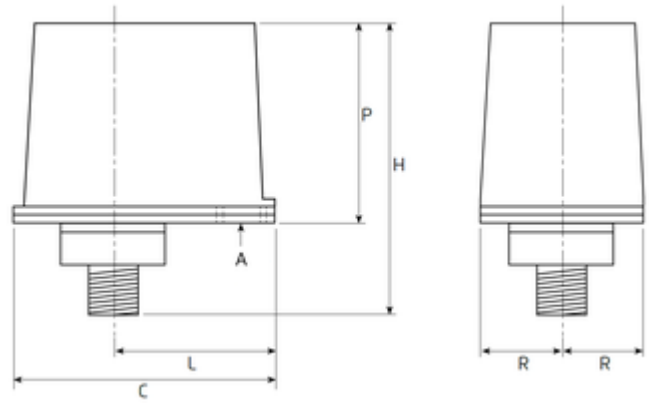
IP66 / NEMA4 Weather-proof
 Ambient Temperature: -40°C to 60°C (-40°F to 140°F)
 Weight: Approx. 0.60 kg (21 oz)

Installation - Caution

An uninsulated section of a single conductor should not be looped around the terminal serving as two connections. The wire must be severed, thereby providing supervision of the connection in the event that the wire becomes dislodged from under the terminal.

Installation Notes:

1. Refer to manufacturers Installation.
2. Wiring and Operation instructions are provided with the PS10 pressure switch.
3. Apply Teflon tape to the threaded male connection on the device (do not use pipe dope).
4. Device should be mounted in the upright position (threaded connection down).
5. Tighten using a wrench on the flats on the device.



A	1/2" Knockout cable entry	L	63mm/2.5"
H	107mm/4.2"	C	96mm/3.8"
P	73mm/2.9"	R	41mm/1.6"

Testing

Test by opening the water bypass alarm test valve. Caution: The above test might also activate any other circuit closer or water motor gongs that are present on the system.

Notes:

The operation of the PS-10 should be tested upon completion of installation and periodically thereafter in accordance with the applicable NFPA codes and standards and/or the authority having jurisdiction (manufacturer recommends quarterly or more frequently). Specifications subject to change without notice.

