

3-WAY DOBLE CHAMBERED HIGH CAPACITY ACCELERATOR

Model 58HC

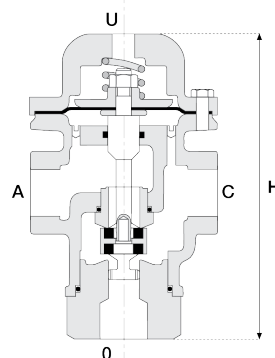
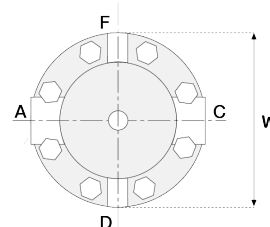
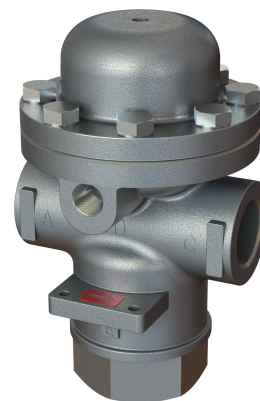
This 3-Way, double chambered, high capacity accelerator is a hydraulically operated, diaphragm actuated valve that in response to command pressure applied to either the upper or lower control chamber, directs flow and pressure between its ports.

- When forces in the upper control chamber are greater, it connects port "A" to "C."

- When forces in the lower control chamber are greater, it connects port "C" to "O."

This valve can be used to either relay and accelerate a signal, or to reverse and accelerate a signal. as a double chambered pilot, it is suitable even when line pressure is very low.

It can also be used for selecting between two control modes, or two sources of pressure.



Technical Data

Pressure rating: 25 bar

Minimum Operating Pressure: 0.2 bar

Temperature: Water up to 60°C

Height (H): 155 mm

Width (W): 95 mm

Weight: 3.25 Kg

Flow Factors:

A to C: Kv 3.5

C to O: Kv 4.6

Standard materials:

Body & Cover: Stainless Steel

Elastomers: NBR

Internals: Brass

Optional materials:

Metal Parts: Nickel Aluminum Bronze, Hastalloy

Seals: FPM, EPDM

Connections

Port	Size	N.O.	N.C.
A	3/4" NPT	Upstream pressure	Upstream pressure
C	3/4" NPT	Control chamber	Control chamber
O	3/4" NPT	Vent	Vent
F/D	1/4" NPT	Command	Upstream pressure
U	1/4" NPT	Vent	Command