

# 3-WAY DOBLE CHAMBERED HIGH CAPACITY ACCELERATOR

## Model 58HC

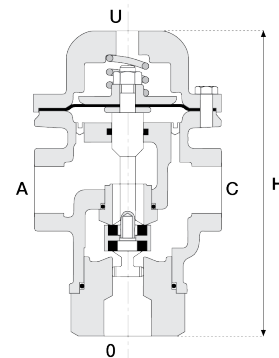
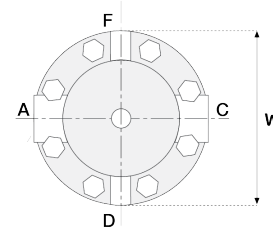
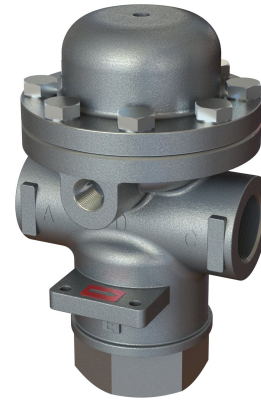
This 3-Way, double chambered, high capacity accelerator is a hydraulically operated, diaphragm actuated valve that in response to command pressure applied to either the upper or lower control chamber, directs flow and pressure between its ports.

- When forces in the upper control chamber are greater, it connects port "A" to "C."

- When forces in the lower control chamber are greater, it connects port "C" to "O."

This valve can be used to either relay and accelerate a signal, or to reverse and accelerate a signal. as a double chambered pilot, it is suitable even when line pressure is very low.

It can also be used for selecting between two control modes, or two sources of pressure.



### Technical Data

**Pressure rating:** 400 psi

**Minimum Operating Pressure:** 3 psi

**Temperature:** Water up to 150°F

**Height (H):** 6.1 inch

**Width (W):** 3.74 inch

**Weight:** 7.2 Lbs

**Flow Factors:**

A to C: Cv 4.1

C to O: Cv 5.4

### Standard materials:

**Body & Cover:** Stainless Steel

**Elastomers:** NBR

**Internals:** Brass

### Optional materials:

**Metal Parts:** Nickel Aluminum Bronze, Hastalloy

**Seals:** FPM, EPDM

### Connections

Port	Size	N.O.	N.C.
A	3/4" NPT	Upstream pressure	Upstream pressure
C	3/4" NPT	Control chamber	Control chamber
O	3/4" NPT	Vent	Vent
F/D	1/4" NPT	Command	Upstream pressure
U	1/4" NPT	Vent	Command