



BERMAD ELECTRONIC REGISTER

E-Register

BERMAD extends its commitment to provide customers with smart metering solutions designed to increase efficiencies, conserve water and improving customer service.

Our electronic register is a state of the art technology ideally suited for all applications. BERMAD's knowledge offers consumers of all types a powerful and unique solutions designed to enhance standard mechanical water meters, providing integrated communication capabilities.

Heavy duty and intended to cover a wide flow range, particularly suited for Waterworks applications, BERMAD's Mechanical Water Meters consist of:

- TURBO-BAR WPH Woltman meter
- 900 Series Hydrometer uniting Woltman meter with hydraulic control valve.

The smart electronic register combines encapsulated and weatherproof housing with a reliable and quality design. Our goal is to enhance our customers' ability to improve their accuracy, increase metering sensitivity, conserve energy and conversely reduce maintenance and cost.



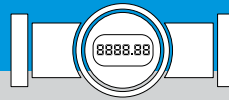
Features and Benefits

- Integrated intelligence communication
- Universal E-Register - suits all water meter types and sizes made by BERMAD
- Instant flow rate
- Forward and reverse flow indication
- Intuitive Android / iOS App
- 12 digits LCD display
- Increases savings with reduced installation and labor costs
- Plug & play installation
- Data logging capabilities
- Battery level alert indication
- Fast pulse output rate
- Support metric & imperial units of measurement
- General alert indication
- Over the air programming
- IP68

BERMAD Meters

Merging monitoring & control





BERMAD Mechanical Meters

All existing BERMAD water meters with mechanical magnetic registers can be upgraded to the Electronic Register

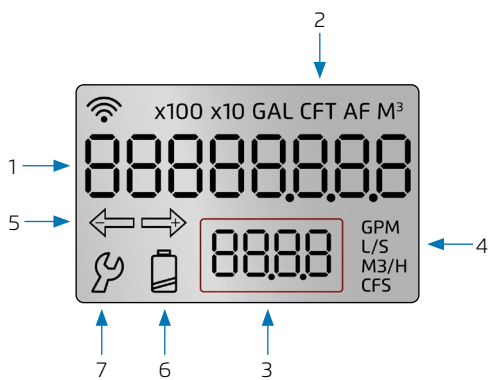


E-Register + 900 Meter



E-Register + Turbo-Bar Meter

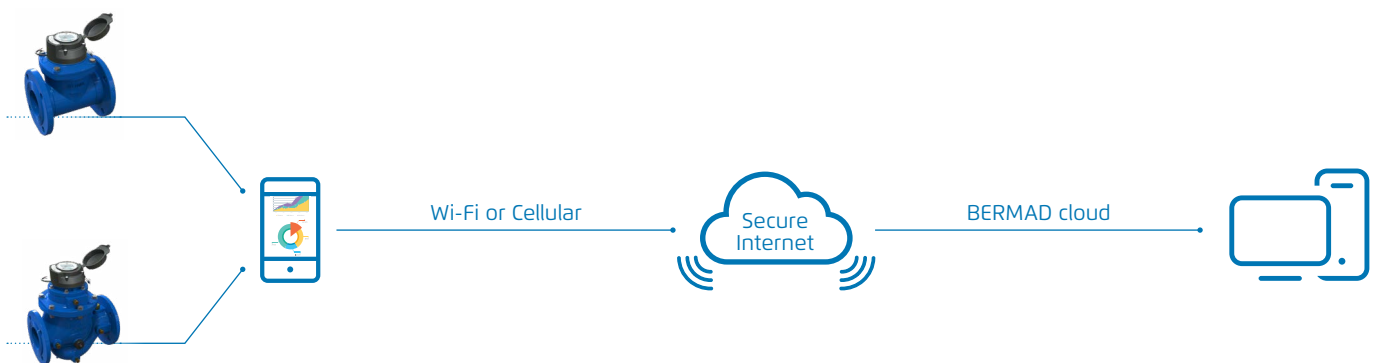
Display



Applicable Icons

1. Volume
2. Volume units
3. Flow Rate
4. Flow Rate units
5. Volume direction
6. Battery level indication
7. General warning

Application



Pressure Management Application

