

# EPSILON

Product Page

## Data Logger



The **EPSILON-DL** is advanced data logger for network monitoring and system analysis.

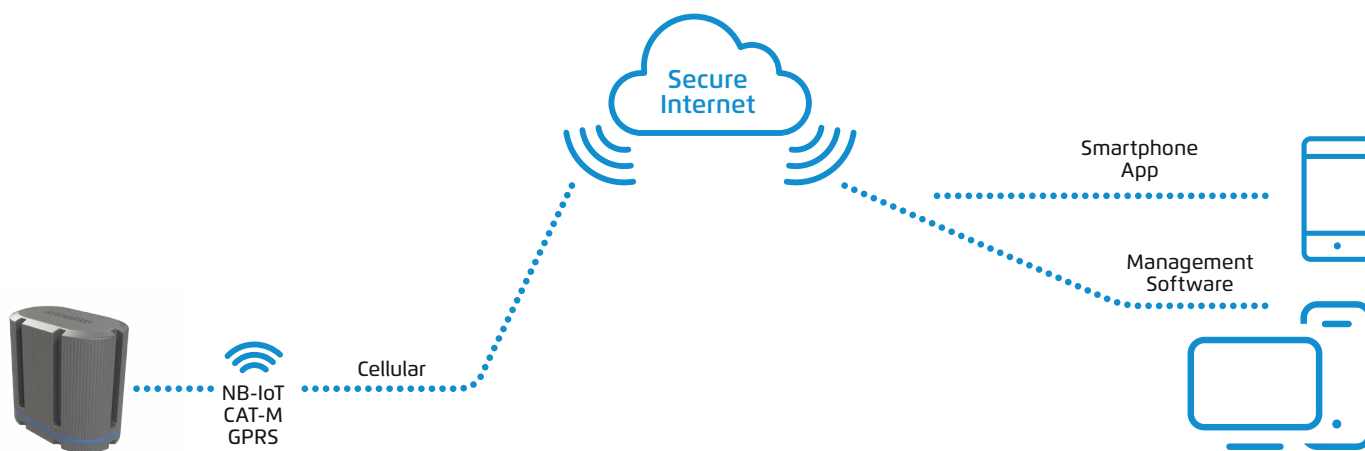
It is essential part of implementing digital twin approach, and thus achieving system optimization and improved efficiency. The end result is a reliable water supply and better service for the client.

The **EPSILON-DL** is a fully remote controlled battery operated data logger. The **EPSILON-DL** logs the data and uses cyber secured technology to transmit the data to a user-friendly cloud platform.

Water Control Solutions



# REAL-TIME MONITORING ANYWHERE ANYTIME



## Features and Benefits

- 5 years internal battery operated or external power
- Large capacity data logging
- Full communication to Bermad cloud or to other platforms via API or FTP for monitoring and remote setting
- Intuitive and user friendly platform
- Advanced modern graphs and reports
- Alert and notifications via E-mail
- Build-in 2 internal pressure sensors with accuracy of +/-0.5%

## Applications

- **Monitoring and data logger** using both digital and analog inputs:
  - Pressure sensors:
    - a. In critical points of the DMA for pressure management
    - b. For valves' operation and performance monitoring
  - Water meters for counting flow rate, accumulated volume and make easier water balance calculation

### BERMAD EPSILON Series

MODEL	Inputs	Internal pressure sensors	Communication	
	Digital		Cellular	Bluetooth
E2	1	✓	✓	✓

## Technical Specifications

### Main features:

- Local Inputs:
  - 1 digital input for metering and discrete sensors
- Sensors calibration for all physical units
- Internal
  - 2 accurate internal pressure sensors +/- 0.5%

### Connectivity:

- Built in 4G Modem with 2G fallback
  - Global data sim card for worldwide plug-and-play internet connectivity
  - Supports GPRS, 4G communication
- Bluetooth communication for technician mode tasks

### Operation modes:

- Online mode: 24/7 connection between data logger and cloud (require external power source)
- Offline mode:
  - Autonomous control operation, predefined cloud communication and real time alerts
  - Designed for power saving when using internal battery

### Power source:

- Lithium battery for operation in offline mode
- 9-16VDC external power input for online mode operation (solar panel, grid power, etc.)

**Integral data logger** with more than 150K records, enables comprehensive log registry that can cover long periods of offline operation

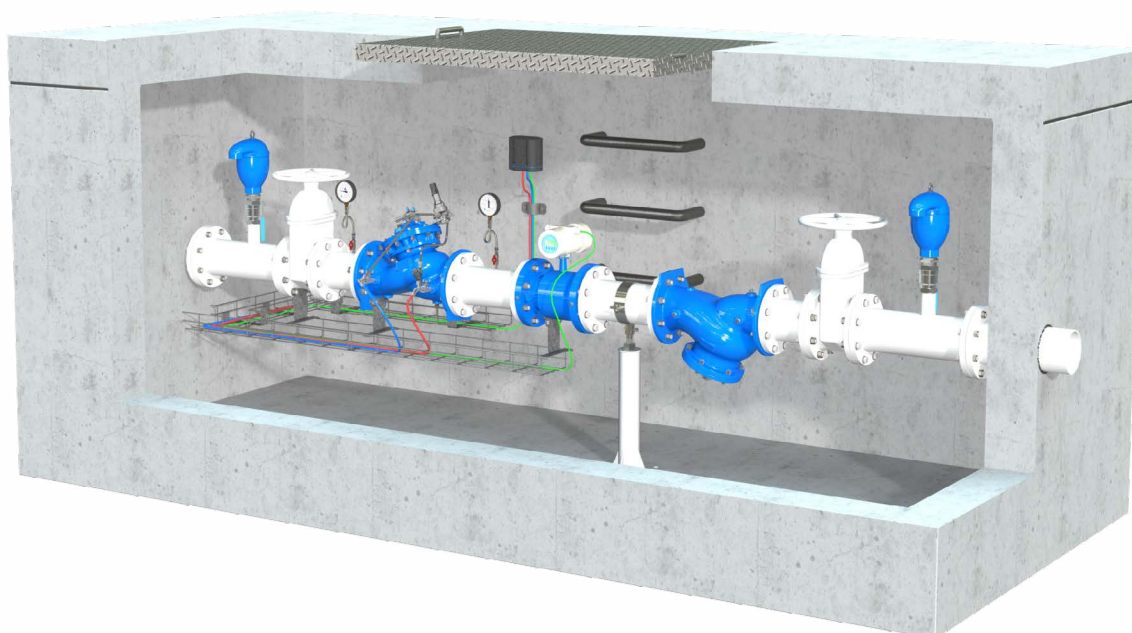
### Periodic over the air firmware upgrades (FOTA)

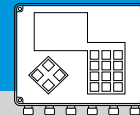
**Outdoor installation:** IP68 rated with UV protection

**Standard compliance:** CE & FCC

**Industrial grade electronic components:** -35°C to 75°C

**Push type connectors** for quick and easy wiring without need for special tools





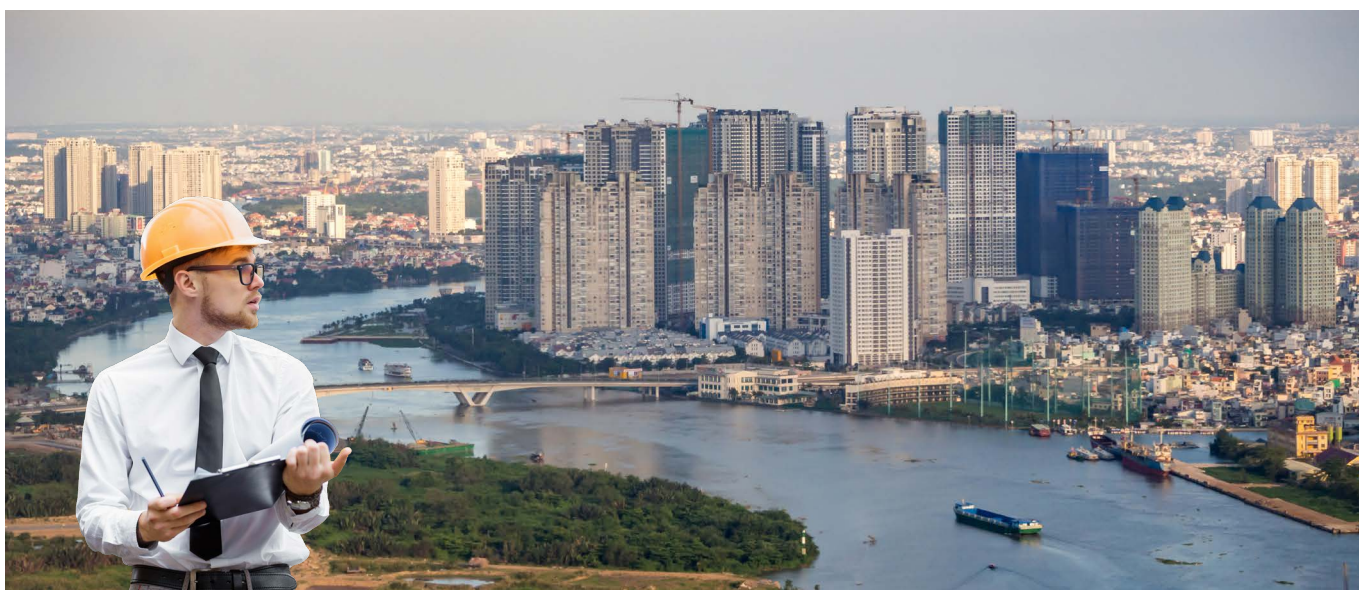
## BERMAD Cloud

**BERMAD Cloud offers web-based internet access to your monitoring management system:**

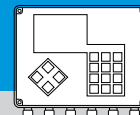
- Global management of all your EPSILON data loggers
- User friendly and intuitive control features
- Real time status and monitoring

## BERMAD Cloud Features:

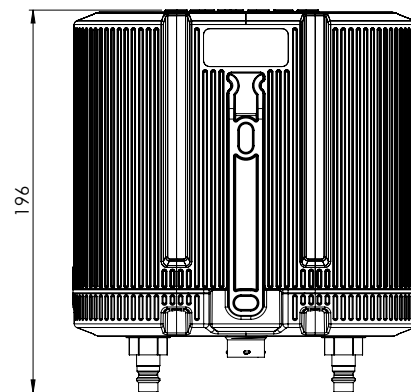
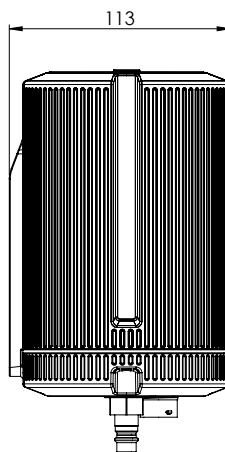
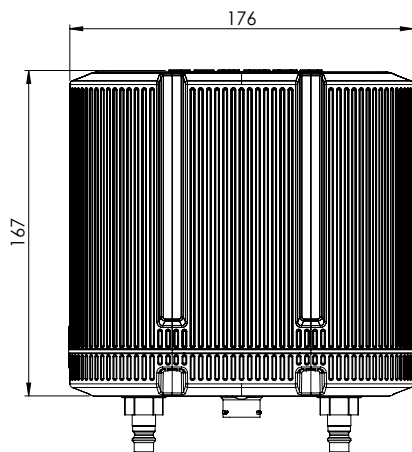
- **Cyber protected login:**
  - Multi-user connectivity for enhanced management and technical support
  - Individual access level authorization (Edit settings, Read only)
- **Global Account management:**
  - Language and time zone selection
  - User privileges
  - Unit selection (Metric, Imperial)
- **Dynamic dashboard:**
  - Geo-referenced map with global view of your monitor and control management project
    - Current status of EPSILON data loggers
    - Up-to-date sensors data
  - Quick access to the EPSILON management tools
    - Setup and programming
    - Wizard for guided unit config
- **Alert control:**
  - Alert status log and E-mail notification
  - Alert management tools:
    - Thresholds of several levels for each of the measured values
    - Alert notifications per user level of authorization and position
- **Log information:**
  - System state, operation events & alerts
  - Periodic sensor data acquisition
    - Watermeter flow & accumulations
    - Pressures
    - Analogue sensor data
    - Battery voltage level
- **Report generator:**
  - Personalized reports for operation and traceability
  - Export to Excel file



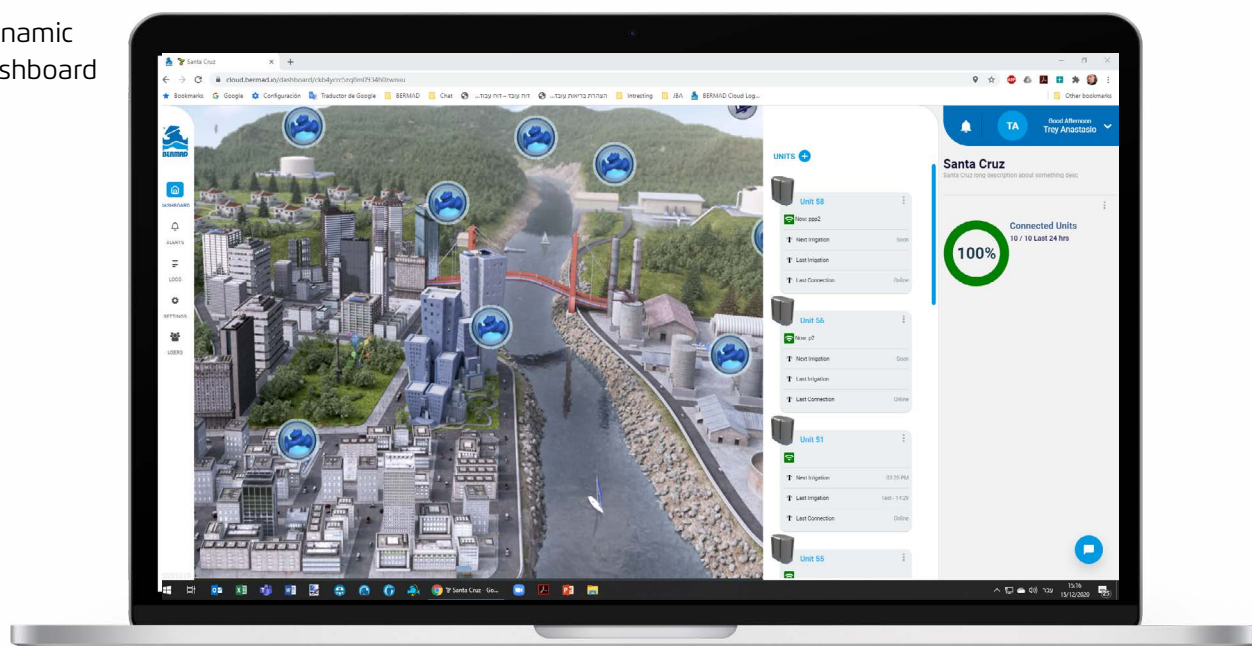


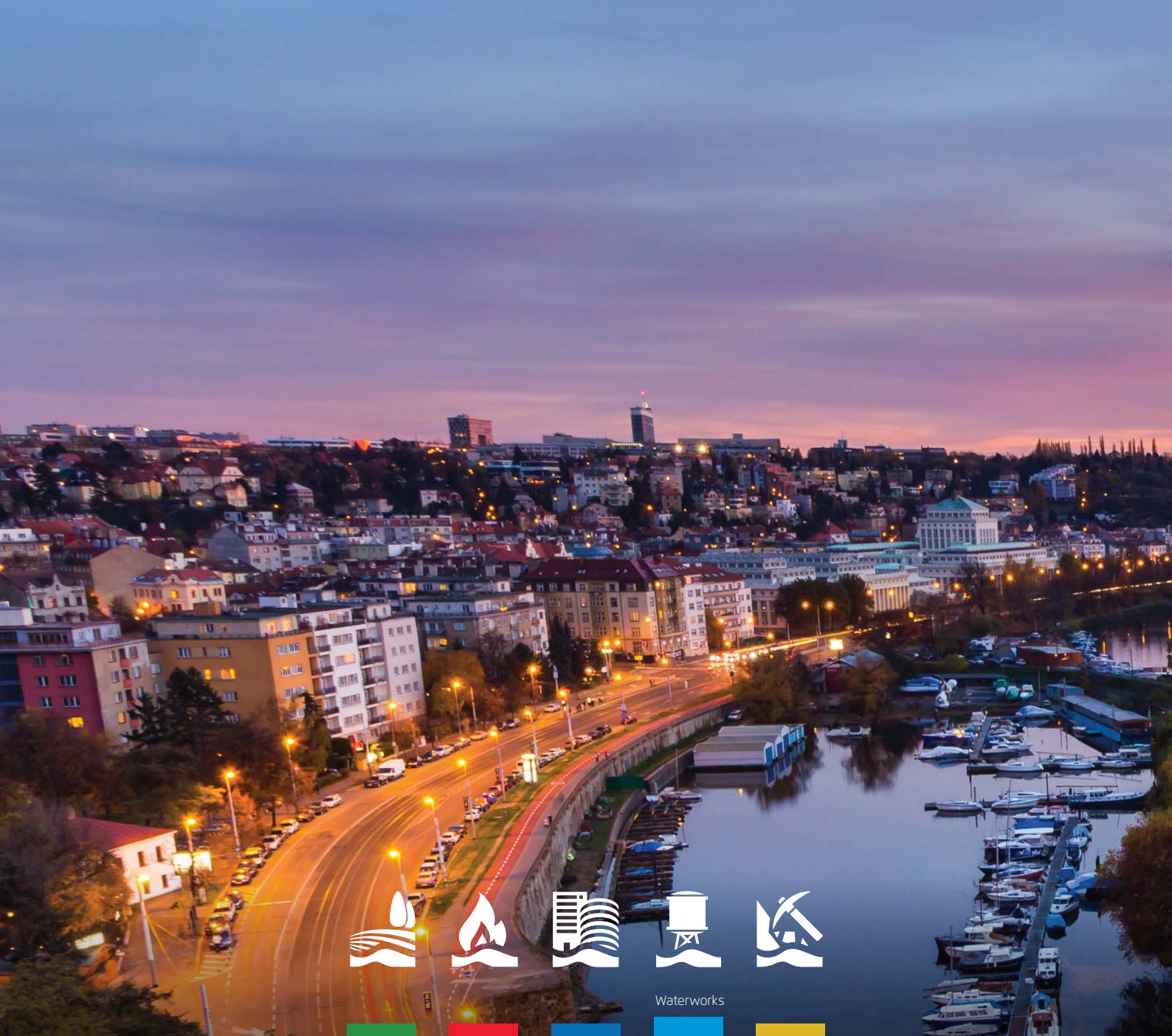


## Dimensions



## Dynamic dashboard





Waterworks



[www.bermad.com](http://www.bermad.com)

The information contained herein may be changed by Bermad without notice. Bermad shall not be held liable for any errors.  
© Copyright 2015-2025 Bermad CS Ltd. PCEWE21-EPSILON-DL | March 2025