

Hydraulically Controlled Deluge Valve with Local Reset

Model FP 400Y - 1M

The BERMAD model 400Y-1M is an elastomeric, hydraulic, line pressure operated deluge valve, designed specifically for advanced fire protection systems and the latest industry standards.

The 400Y-1M is activated by a pressure drop in a fusible plug wet pilot line. Once open the 400Y-1M latches open until locally reset.

The optional valve position indicator can include a limit switch suitable for Fire & Gas monitoring systems.

The 400Y-1M is ideal for systems with open nozzles for water or foam discharge.



(for Illustration Only)

Benefits and Features

■ Safety and reliability

- Time proven, simple, fail-safe actuation
- Single piece, rugged elastomeric diaphragm seal - VRSD technology
- Obstacle-free, uninterrupted flow path
- No mechanical moving parts
- Latches open until reset locally
- Valve position limit switches (optional)
- Local valve position indicator beacon (optional)

■ High performance

- Very high flow efficiency
- Straight through flow Y- type body
- Approved for PN25 / 365 psi

■ Designed for fire protection

- Face-to-face length standardized to ISO 5752 / EN558-1
- Designed to meet the requirements of the industry standards

■ Quick and easy maintenance

- In-line serviceable
- Fast and easy cover removal
- Swivel mounted drain valves *

* for 3" valves and larger

Typical Applications

- Hydraulic remote controlled systems
- Automatic water spray
- Foam applications
- Corrosive water systems

Approvals



UL-Listed
Special System Water Control
Valves, Deluge Type (VLFT)
Sizes 1½" - 16"



FM Approved
for Deluge Sprinkler Systems
Sizes 1½" - 8"



Det Norske Veritas
Type Approval



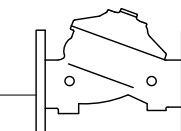
ABS
American Bureau of Shipping
Type Approval



Lloyd's Register
Type Approval

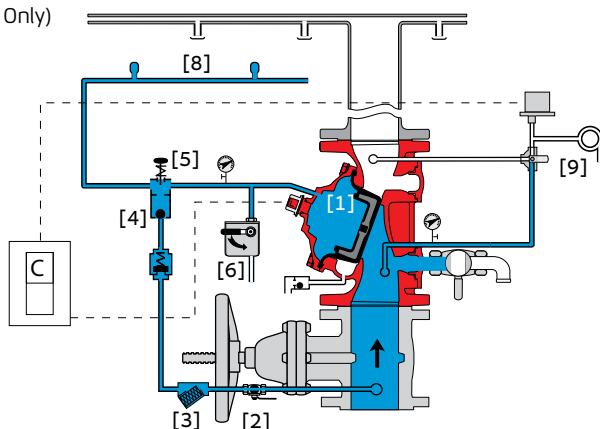
Additional Features

- Valve position limit switches
- Local valve position indicator beacon
- Sea water compatibility
- Drain valve/s inlet/outlet

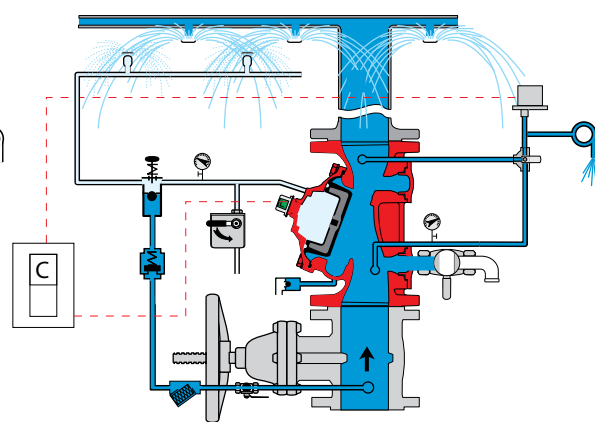


Operation

(for Illustration Only)



Valve Closed (normal conditions)



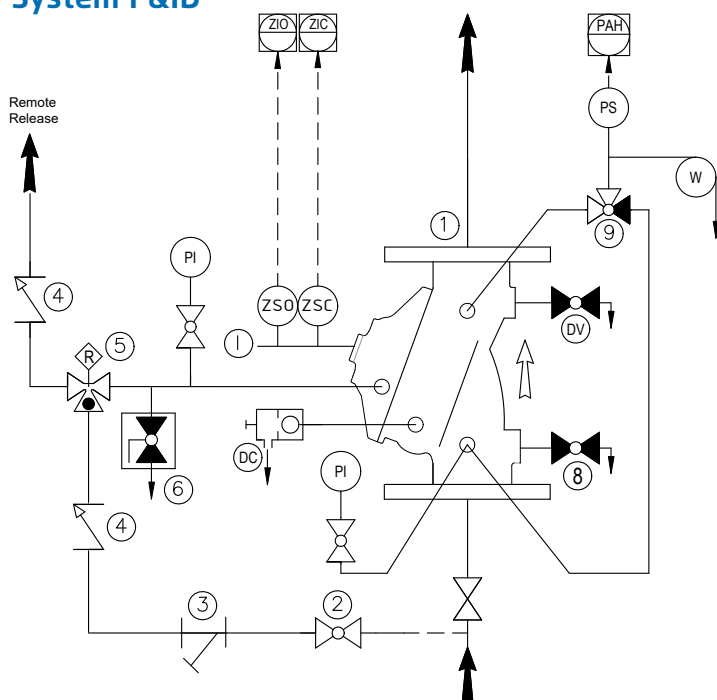
Valve Open (fire conditions)

The BERMAD model 400Y-1M is held closed by water pressure in the control chamber [1]. Upon release of pressure from the control chamber, the valve opens.

Under NORMAL conditions, water pressure is supplied to the control chamber via the priming line [2] strainer [3], and is then trapped in the control chamber by the closed manual emergency release [6] and the check feature [4], of the easy-lock manual reset valve [5]. The water pressure trapped in the control chamber of the deluge valve holds the diaphragm against the valve seat, sealing it drip-tight and keeping the system pipes dry.

Under FIRE conditions, water pressure is released from the control chamber, either with the manual emergency release, or by a release of water pressure of the hydraulic fusible plug pilot line [8], this increase in flow switches the easy-lock to close releasing pressure from the valve control chamber and thereby opening the deluge valve, allowing water to flow into the system piping and to the alarm device [9]. Once open the 400Y-1M latches open and can only be closed locally by manually depressing the easy-lock reset button.

System P&ID



Components

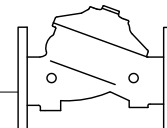
- 1 BERMAD 400Y Deluge Valve
- 2 Priming Ball Valve
- 3 Priming Strainer
- 4 Check valve
- 5 Easy-Lock – Manual Reset
- 6 Manual Emergency Release

Optional System Items

- ZS Limit Switch Assembly
- I Visual Indicator
- DV Additional Drain/Test Valve
- PS Pressure Switch
- W Water Motor Alarm
- PI Pressure Gauge*
- 8 Drain Valve*
- 9 3 Way Alarm Test Valve*
- DC Automatic Drip Check Valve*

See also Factory Fitted Options under the Valve Code Designations on the last page

* Items mandatory for FM approval and included by the addition of suffix A in the code designations on page 4

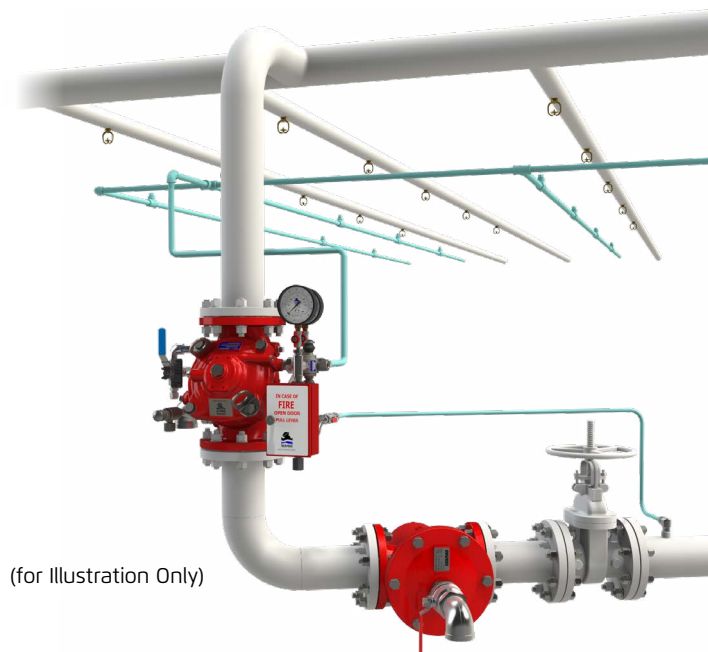
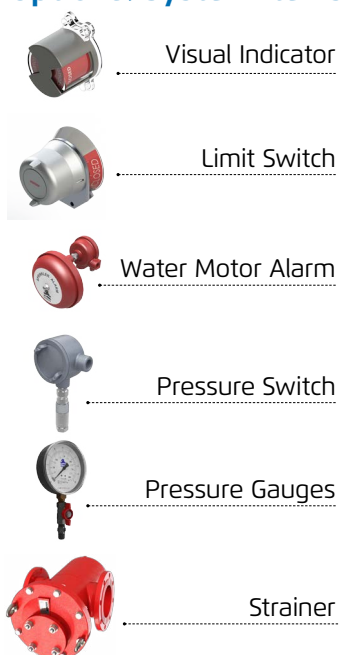


System Installation

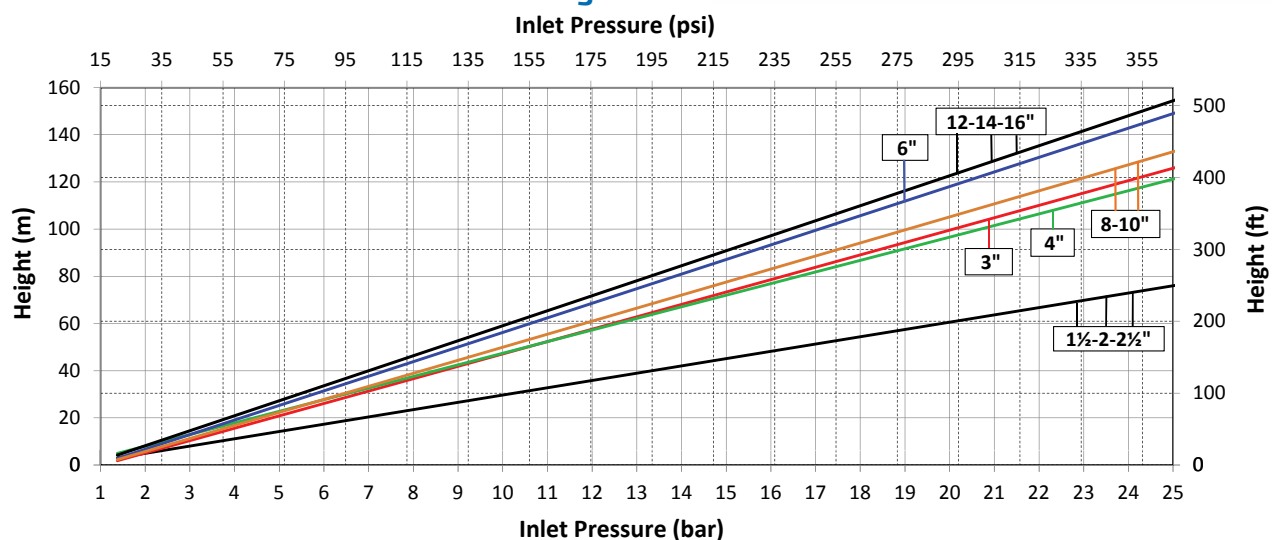
A typical installation of the BERMAD model 400Y-1M, features automatic actuation by way of a fall in pressure of a fusible plug wet pilot line. It can also be triggered manually using the local manual emergency release, or by using a remote hydraulic release.

When open and fitted with a limit switch the valve can send a feedback signal to a remote valve status monitoring system.

Optional System Items



Maximum Allowable Wet Pilot line Height Above Valve



Engineering Specifications

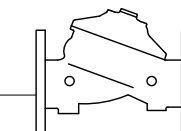
The deluge valve shall be UL-listed and FM-approved, 25-bar/365-psi rated, with a straight-through, Y-type-body. The valve shall have an unobstructed flow path, with no stem guide or supporting ribs. Valve actuation shall be accomplished by a single-piece, rolling diaphragm bonded with a rugged radial seal disk. The diaphragm assembly shall be the only moving part.

The deluge valve shall include an Easy-Lock latching valve, a Y-type strainer, a ball drain valve, an automatic drip-check with manual override, 4-inch pressure gauges, and a manual emergency release housed in a stainless steel box. The valve drain socket shall be flanged and have 360-degree swivel.

The valve shall be equipped with a protective-covered, dual-color, rotational position indicator, readable from 50 meters, and with two limit switches enclosed in a protective switch box.

Removing the valve cover for inspection or maintenance shall not require removing the control trim.

The deluge valve and its entire control trim shall be supplied pre-assembled and hydraulically tested by a factory certified to ISO 9000 and 9001 standards.



Technical Data

Available Sizes (inch)

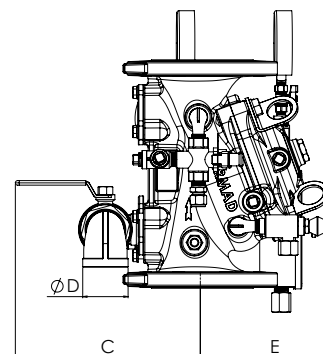
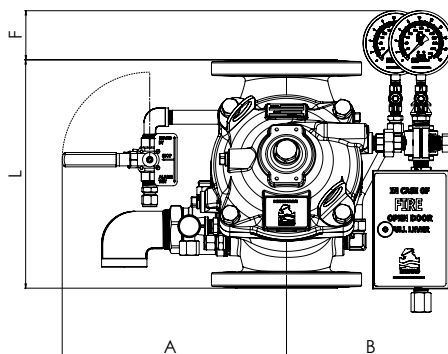
- Flanged - 1½, 2, 3, 4, 6, 8, 10, 12, 14 & 16"
- Grooved - 1½, 2, 3, 4, 6 & 8"

Pressure Rating

- ANSI#150 - 16 bar / 235 psi
- ANSI#300 - 1½" to 10" 25 bar / 365 psi
12" to 16" 20 bar / 300 psi
- Grooved/Threaded - 25 bar / 365 psi

Elastomer

- HTNR - Fabric Reinforced High Temperature Compound



Valve Size	1½" DN40		2" DN50		3" DN80		4" DN100		6" DN150		8" DN200		10" DN250		12" DN300		14" DN350		16" DN400	
Unit	mm	in	mm	in	mm	in	mm	in	mm	in	mm	in	mm	in	mm	in	mm	in	mm	in
L ANSI #150 ⁽¹⁾	230	9.1	230	9.1	310	12.2	350	13.8	480	18.9	600	23.6	730	28.7	850	33.5	980	38.6	1100	43.3
L ANSI #300 ⁽²⁾	230	9.1	235	9.3	326	12.8	368	14.5	506	19.9	626	24.7	730	28.8	850	33.5	980	38.6	1100	43.3
A	259	10.2	259	10.2	319	12.6	327	12.9	380	15.0	410	16.1	410	16.1	523	20.6	523	20.6	523	20.6
B	167	6.6	167	6.6	225	8.9	235	9.3	290	11.4	318	12.5	318	12.5	431	17.0	431	17.0	431	17.0
C	241	9.5	241	9.5	274	10.8	290	11.4	305	12.0	320	12.6	320	12.6	383	15.1	383	15.1	408	16.1
ØD	¾"		¾"		1½"		2"		2"		2"		2"		2"		2"		2"	
E	180	7.1	180	7.1	185	7.3	195	7.7	228	9.0	295	11.6	295	11.6	441	17.4	441	17.4	415	16.3
F	101	4.0	101	4.0	91	3.6	78	3.1	30	1.2	5	0.2	-	-	-	-	-	-	-	-
Kv / Cv ⁽³⁾	68 / 79		80 / 92		190 / 219		345 / 398		790 / 912		1160 / 1340		1355 / 1652		2600 / 3040		2950 / 3450		3254 / 3801	
Leq: m / ft ⁽⁴⁾	2 / 7		6 / 18		8 / 25		9 / 31		15 / 49		28 / 92		64 / 209		46 / 149		56 / 184		90 / 295	
Kg / lb (ANSI # 150)	18 / 40		20 / 43		34 / 76		44 / 98		88 / 193		151 / 332		181 / 398		324 / 713		357 / 785		403 / 887	
Kg / lb (ANSI # 300)	20 / 45		22 / 48		35 / 77		51 / 113		108 / 238		171 / 376		217 / 477		364 / 801		429 / 944		523 / 1151	

Notes: ⁽¹⁾ Refers to the length dimensions for Raised Face ANSI #150, ISO 16 Flanged, Threaded and Grooved valves

⁽²⁾ Refers to the length dimensions for Raised Face ANSI #300 and ISO 25 Flanged valves

⁽³⁾ Flow coefficients apply to a fully opened valve

⁽⁴⁾ Leq (Equivalent Pipe Length) refers to turbulent flow in new steel pipe schedule 40 for a fully opened valve, values given for general consideration only

⁽⁵⁾ **IMPORTANT:** Dimensions for the trim envelope or extents refer to a vertical orientation and may vary with specific component positioning; - allow a tolerance of at least ±10%

Valve Code Designations

FP	6"	400Y-1M	03	V	C	A5	PR	NN	N6nW																																																																																																																																	
<table><tr><th>Category</th><th>Code</th></tr><tr><td>Standard</td><td>FP</td></tr><tr><td>Seawater</td><td>FS</td></tr><tr><td>Foam Concentrate</td><td>FC</td></tr></table>	Category	Code	Standard	FP	Seawater	FS	Foam Concentrate	FC	<table><tr><th>Valve Size</th><td></td></tr><tr><td>1½"</td><td>40 mm</td></tr><tr><td>2"</td><td>50 mm</td></tr><tr><td>3"</td><td>80 mm</td></tr><tr><td>4"</td><td>100 mm</td></tr><tr><td>6"</td><td>150 mm</td></tr><tr><td>8"</td><td>200 mm</td></tr><tr><td>10"</td><td>250 mm</td></tr><tr><td>12"</td><td>300 mm</td></tr><tr><td>14"</td><td>350 mm</td></tr><tr><td>16"</td><td>400 mm</td></tr></table>	Valve Size		1½"	40 mm	2"	50 mm	3"	80 mm	4"	100 mm	6"	150 mm	8"	200 mm	10"	250 mm	12"	300 mm	14"	350 mm	16"	400 mm	<table><tr><th>Speed Control</th><th>Code</th></tr><tr><td>Closing speed</td><td>01</td></tr><tr><td>Opening speed</td><td>02</td></tr><tr><td>Opening & Closing speed</td><td>03</td></tr><tr><td>None</td><td>-</td></tr></table>	Speed Control	Code	Closing speed	01	Opening speed	02	Opening & Closing speed	03	None	-	<table><tr><th>Installation</th><th>Code</th></tr><tr><td>Vertical</td><td>V</td></tr><tr><td>Horizontal</td><td>H</td></tr></table>	Installation	Code	Vertical	V	Horizontal	H	<table><tr><th>Material Body & Cover⁽¹⁾</th><th>Code</th></tr><tr><td>Ductile Iron A356⁽²⁾</td><td>C</td></tr><tr><td>Steel ASTM A216 WCB⁽²⁾</td><td>S</td></tr><tr><td>Stainless Steel 316</td><td>N</td></tr><tr><td>Nickel Al Bronze C95800</td><td>U</td></tr><tr><td>Super Duplex Grade 5A</td><td>D</td></tr></table>	Material Body & Cover ⁽¹⁾	Code	Ductile Iron A356 ⁽²⁾	C	Steel ASTM A216 WCB ⁽²⁾	S	Stainless Steel 316	N	Nickel Al Bronze C95800	U	Super Duplex Grade 5A	D	<table><tr><th>End Connections</th><th>Code</th></tr><tr><td>ANSI#150RF</td><td>A5</td></tr><tr><td>ANSI#150FF</td><td>a5</td></tr><tr><td>ANSI#300RF</td><td>A3</td></tr><tr><td>ISO PN16</td><td>16</td></tr><tr><td>ISO PN25</td><td>25</td></tr><tr><td>Grooved 235psi/PN16, ANSI C606</td><td>VI</td></tr><tr><td>Grooved 365psi/PN25, ANSI C606</td><td>V2</td></tr></table>	End Connections	Code	ANSI#150RF	A5	ANSI#150FF	a5	ANSI#300RF	A3	ISO PN16	16	ISO PN25	25	Grooved 235psi/PN16, ANSI C606	VI	Grooved 365psi/PN25, ANSI C606	V2	<table><tr><th>Coating</th><th>Code</th></tr><tr><td>Polyester Red</td><td>PR</td></tr><tr><td>High Build Epoxy</td><td>ER</td></tr><tr><td>Uncoated</td><td>UC</td></tr></table>	Coating	Code	Polyester Red	PR	High Build Epoxy	ER	Uncoated	UC	<table><tr><th>Tubing & Fittings</th><th>Code</th></tr><tr><td>Stainless Steel 316</td><td>NN</td></tr><tr><td>Monel 400</td><td>MM</td></tr><tr><td>Super Duplex</td><td>DD</td></tr></table>	Tubing & Fittings	Code	Stainless Steel 316	NN	Monel 400	MM	Super Duplex	DD	<table><tr><th>Factory Fitted Options</th><th>Code</th></tr><tr><td>General Purpose NEMA-4 Pressure Switch⁽³⁾</td><td>P</td></tr><tr><td>Ex Proof NEC, Div.1 Pressure Switch⁽³⁾</td><td>P7</td></tr><tr><td>Ex d ATEX Pressure Switch⁽³⁾</td><td>P9</td></tr><tr><td>Ex d Pressure Switch, SS316 Enclosure⁽³⁾</td><td>P9Jn</td></tr><tr><td>Ex d Pressure Switch, SS316 Enclosure, Monel Sensor⁽³⁾</td><td>P9mJn</td></tr><tr><td>Single Limit Switch, General Purpose</td><td>S</td></tr><tr><td>Double Ex d Proximity Limit Switch</td><td>SS9</td></tr><tr><td>Double Ex d Proximity Limit Switch with SS316 Junction Box</td><td>SS9Jn</td></tr><tr><td>Pressure Gauge Assembly⁽³⁾</td><td>6</td></tr><tr><td>S.S Glycerin Pressure Gauge Assembly⁽³⁾</td><td>6n</td></tr><tr><td>Monel Pressure Gauge Assembly</td><td>6m</td></tr><tr><td>Drain Valve</td><td>DV</td></tr><tr><td>Water Motor Alarm Assembly⁽³⁾</td><td>W</td></tr><tr><td>Special Elastomer</td><td>E⁽⁴⁾</td></tr><tr><td>Large Control Filter</td><td>F</td></tr><tr><td>Valve Position Indicator</td><td>I</td></tr><tr><td>S.S 316 Trim Accessories</td><td>N</td></tr><tr><td>Pressure Transmitter⁽³⁾</td><td>Q</td></tr><tr><td>Drain and Indicating Components</td><td>A</td></tr></table>	Factory Fitted Options	Code	General Purpose NEMA-4 Pressure Switch ⁽³⁾	P	Ex Proof NEC, Div.1 Pressure Switch ⁽³⁾	P7	Ex d ATEX Pressure Switch ⁽³⁾	P9	Ex d Pressure Switch, SS316 Enclosure ⁽³⁾	P9Jn	Ex d Pressure Switch, SS316 Enclosure, Monel Sensor ⁽³⁾	P9mJn	Single Limit Switch, General Purpose	S	Double Ex d Proximity Limit Switch	SS9	Double Ex d Proximity Limit Switch with SS316 Junction Box	SS9Jn	Pressure Gauge Assembly ⁽³⁾	6	S.S Glycerin Pressure Gauge Assembly ⁽³⁾	6n	Monel Pressure Gauge Assembly	6m	Drain Valve	DV	Water Motor Alarm Assembly ⁽³⁾	W	Special Elastomer	E ⁽⁴⁾	Large Control Filter	F	Valve Position Indicator	I	S.S 316 Trim Accessories	N	Pressure Transmitter ⁽³⁾	Q	Drain and Indicating Components	A
Category	Code																																																																																																																																									
Standard	FP																																																																																																																																									
Seawater	FS																																																																																																																																									
Foam Concentrate	FC																																																																																																																																									
Valve Size																																																																																																																																										
1½"	40 mm																																																																																																																																									
2"	50 mm																																																																																																																																									
3"	80 mm																																																																																																																																									
4"	100 mm																																																																																																																																									
6"	150 mm																																																																																																																																									
8"	200 mm																																																																																																																																									
10"	250 mm																																																																																																																																									
12"	300 mm																																																																																																																																									
14"	350 mm																																																																																																																																									
16"	400 mm																																																																																																																																									
Speed Control	Code																																																																																																																																									
Closing speed	01																																																																																																																																									
Opening speed	02																																																																																																																																									
Opening & Closing speed	03																																																																																																																																									
None	-																																																																																																																																									
Installation	Code																																																																																																																																									
Vertical	V																																																																																																																																									
Horizontal	H																																																																																																																																									
Material Body & Cover ⁽¹⁾	Code																																																																																																																																									
Ductile Iron A356 ⁽²⁾	C																																																																																																																																									
Steel ASTM A216 WCB ⁽²⁾	S																																																																																																																																									
Stainless Steel 316	N																																																																																																																																									
Nickel Al Bronze C95800	U																																																																																																																																									
Super Duplex Grade 5A	D																																																																																																																																									
End Connections	Code																																																																																																																																									
ANSI#150RF	A5																																																																																																																																									
ANSI#150FF	a5																																																																																																																																									
ANSI#300RF	A3																																																																																																																																									
ISO PN16	16																																																																																																																																									
ISO PN25	25																																																																																																																																									
Grooved 235psi/PN16, ANSI C606	VI																																																																																																																																									
Grooved 365psi/PN25, ANSI C606	V2																																																																																																																																									
Coating	Code																																																																																																																																									
Polyester Red	PR																																																																																																																																									
High Build Epoxy	ER																																																																																																																																									
Uncoated	UC																																																																																																																																									
Tubing & Fittings	Code																																																																																																																																									
Stainless Steel 316	NN																																																																																																																																									
Monel 400	MM																																																																																																																																									
Super Duplex	DD																																																																																																																																									
Factory Fitted Options	Code																																																																																																																																									
General Purpose NEMA-4 Pressure Switch ⁽³⁾	P																																																																																																																																									
Ex Proof NEC, Div.1 Pressure Switch ⁽³⁾	P7																																																																																																																																									
Ex d ATEX Pressure Switch ⁽³⁾	P9																																																																																																																																									
Ex d Pressure Switch, SS316 Enclosure ⁽³⁾	P9Jn																																																																																																																																									
Ex d Pressure Switch, SS316 Enclosure, Monel Sensor ⁽³⁾	P9mJn																																																																																																																																									
Single Limit Switch, General Purpose	S																																																																																																																																									
Double Ex d Proximity Limit Switch	SS9																																																																																																																																									
Double Ex d Proximity Limit Switch with SS316 Junction Box	SS9Jn																																																																																																																																									
Pressure Gauge Assembly ⁽³⁾	6																																																																																																																																									
S.S Glycerin Pressure Gauge Assembly ⁽³⁾	6n																																																																																																																																									
Monel Pressure Gauge Assembly	6m																																																																																																																																									
Drain Valve	DV																																																																																																																																									
Water Motor Alarm Assembly ⁽³⁾	W																																																																																																																																									
Special Elastomer	E ⁽⁴⁾																																																																																																																																									
Large Control Filter	F																																																																																																																																									
Valve Position Indicator	I																																																																																																																																									
S.S 316 Trim Accessories	N																																																																																																																																									
Pressure Transmitter ⁽³⁾	Q																																																																																																																																									
Drain and Indicating Components	A																																																																																																																																									

Notes:

⁽¹⁾ Other materials available

⁽²⁾ Coated internally and externally

⁽³⁾ Supplied loose

⁽⁴⁾ Consult BERMAD for availability

Notes: ⁽¹⁾ Other materials available

⁽²⁾ Coated internally and externally

⁽³⁾ Supplied loose

⁽⁴⁾ Consult BERMAD for availability

* More options available - contact BERMAD

